



Technically Speaking

Whether it is for an industrial plant, large CBD office building, a shopping centre, a university or TAFE, a private or public hospital or a municipal building, substations and associated High Voltage (HV) & Low Voltage (LV) equipment will underpin your entire electrical infrastructure. If poorly maintained, the results can be catastrophic, with lengthy power outages causing costly business downtime and opening the door to a wide range of potentially very dangerous situations.



O'Donnell Griffin Testing, Service & Maintenance to Australian Standards for all your HV & LV systems:

HIGH VOLTAGE SUBSTATION & EQUIPMENT MAINTENANCE | THERMOGRAPHIC SURVEYS | LOW VOLTAGE SWITCHGEAR MAINTENANCE | TRANSFORMER OIL DGA & ON-LINE DRYING | PROTECTION RELAY TESTING
POWER QUALITY ANALYSIS | EARTH RESISTANCE TESTING | CABLE FAULT LOCATION | TEST EQUIP HIRE

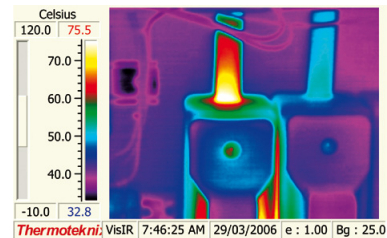
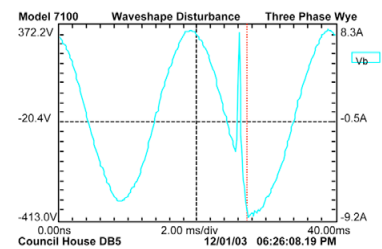


Key Technical Services offered

AS2467 states the importance of keeping electrical switchgear and its associated apparatus in acceptable condition. Regular routine maintenance will ensure continued safe and satisfactory operation, and minimise the risk of breakdown and subsequent interruption of your power supply.

O'Donnell Griffin has an accredited and qualified Technical Services team who specialise in the services listed below. They are strongly supported by our stringent Safety and Quality systems and all team members are fully conversant with relevant Australian Standards and legislation and will provide asset appraisals against these.

- HV and LV substation and switchgear installation, testing, commissioning and maintenance
- HV and LV circuit breaker testing, installation, retro-fitting and maintenance
- Thermographic (Infra red) surveying of electrical equipment
- Power quality analysis and reporting (includes power surveys to capture harmonics, record disturbances, measure loads and power factor)
- High voltage switching
- Very Low Frequency (VLF) testing of high voltage cables
- Hi-Pot testing of HV electrical equipment. (AC, DC and VLF)
- Transformer testing: Oil filtration and on line dry outs, Turns Ratio, Winding Resistance, Insulation Resistance, Hi-Pot testing and oil samples taken for Dissolved Gas Analysis
- Secondary injection testing of protection relays
- Primary current injection for testing the operation of Main 415v circuit breakers
- Lightning protection system inspections
- RCD testing
- Hospital body and cardiac protected area testing
- Low resistance (Ducter) testing of busbar connections.
- Substation earthing. Installation, maintenance and testing to measure both individual stakes and overall grid resistances.
- 24 Hour on call electrical breakdown service.
- Cable locating and cable fault locating
- Test equipment hire.



Service and Support 24/7

O'Donnell Griffin's 24 hour emergency breakdown service provides you with the assistance required to meet your needs, 24 hours a day, 7 days a week. We will always ensure that the timing of the service tasks you need us to undertake are fully coordinated with all appropriate site personnel so as to minimise disruption to normal site operations, even offering temporary power supplies as required.

Visit us at www.odg.com.au or contact our Customer Service team today at **1300 100 ODG** and ask us how you can integrate your HV and/or LV maintenance into your overall maintenance plan.

Clients

- AGL
- ATCO Transformer Co.
- Austral Bricks
- Bradkin
- Caterpillar
- CBRE
- Coca Cola
- Hawaiian
- Hewlett Packard
- JLL
- Knight Frank
- Kraft
- Nestle
- Note Printing Works
- Pfizer
- Savilles
- Schiavello
- Spotless
- Stocklands
- Telstra Building
- Toyota
- Transfield Services
- Verve Energy
- VIP Packaging
- Water Corporation
- Westpac
- Wormald

Electrical Licences

ACT: EC1972592 | NSW: 3958C | NT: EC0064 | QLD: 131 | SA: PGE139838 | VIC: REC1584 | WA: EC001091